

Fish Food & Fishing Flies

With a Focus on Trout

L. Kirk Klingensmith



FLY FISHERS
INTERNATIONAL

Go a Little Deeper into:

What Fish Eat

How Flies “Trigger”

Touch on a Little Entomology

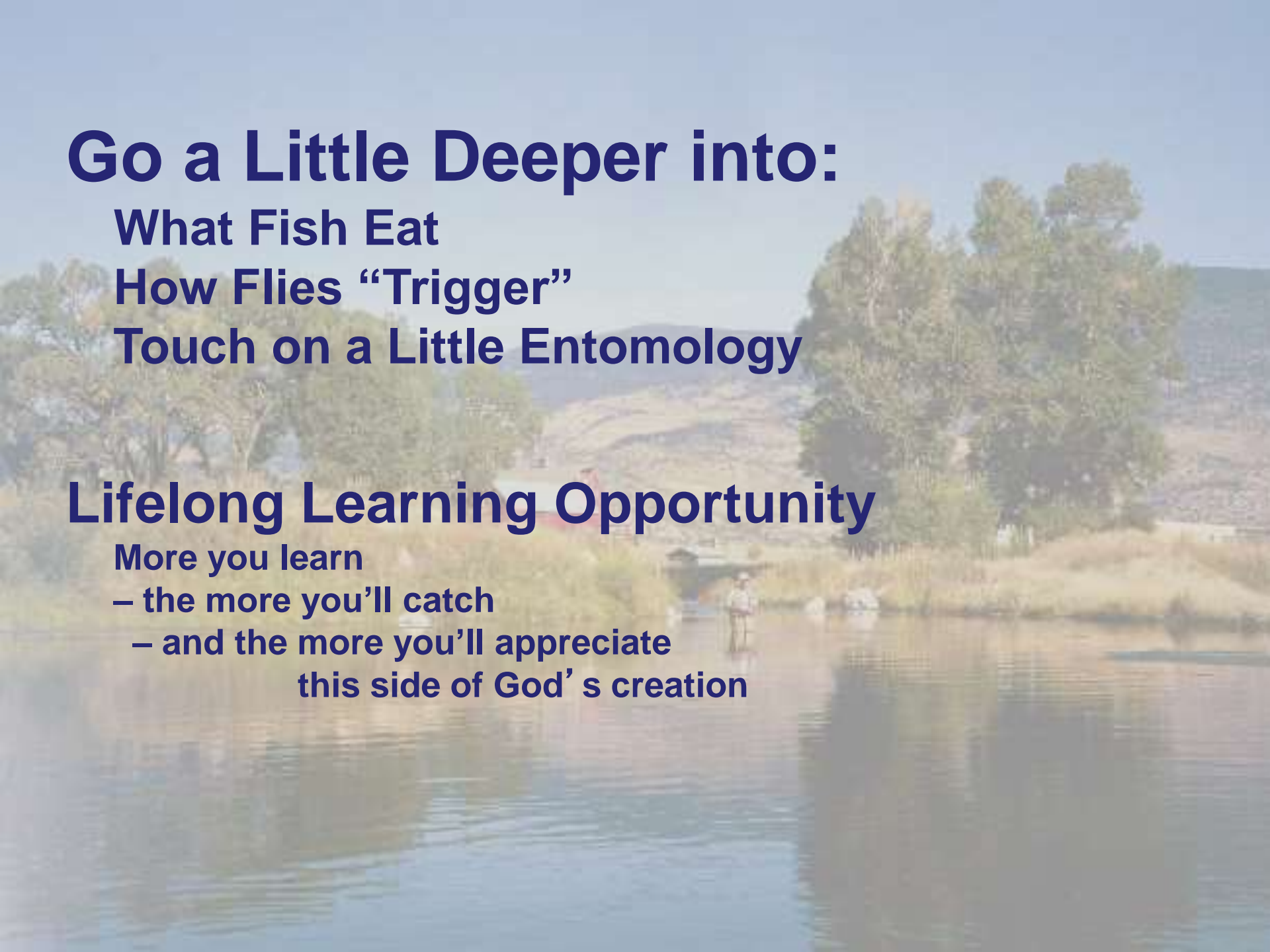
Lifelong Learning Opportunity

More you learn

– the more you’ll catch

– and the more you’ll appreciate

this side of God’s creation

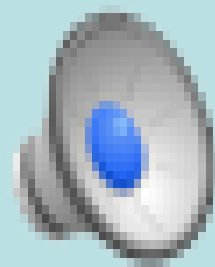


Picking Food from the Junk Conveyor What are they Looking for??



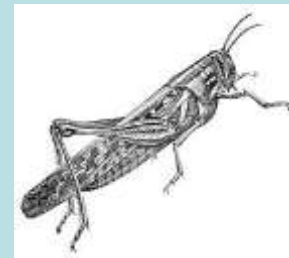
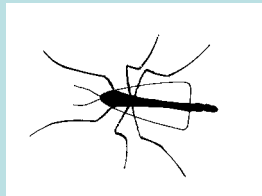
Picking Food from the Junk Conveyor

What are they Looking for??

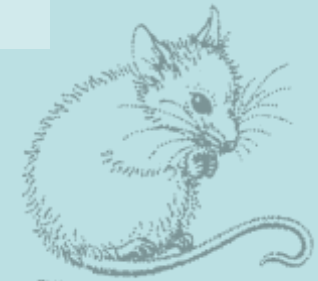
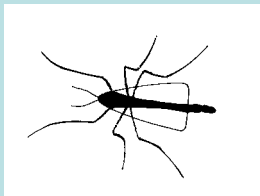
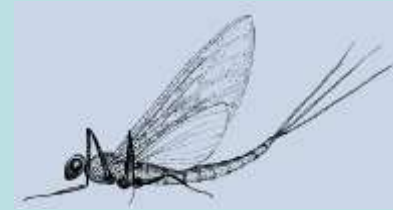


Cathy & Barry Beck – New Zealand

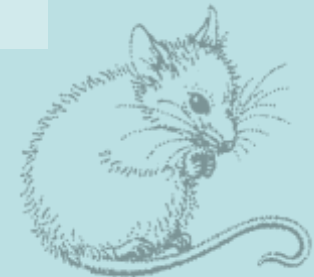
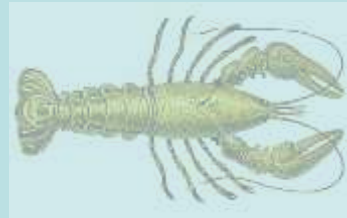
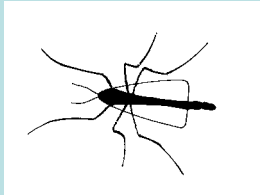
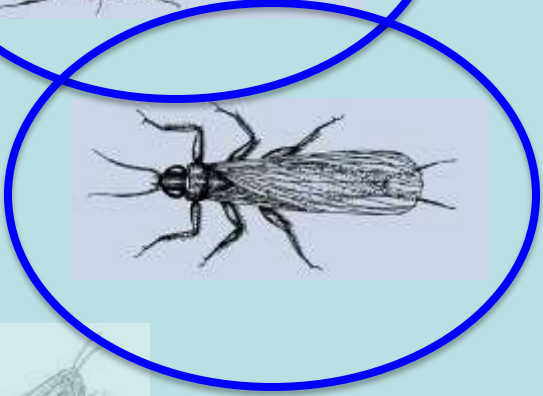
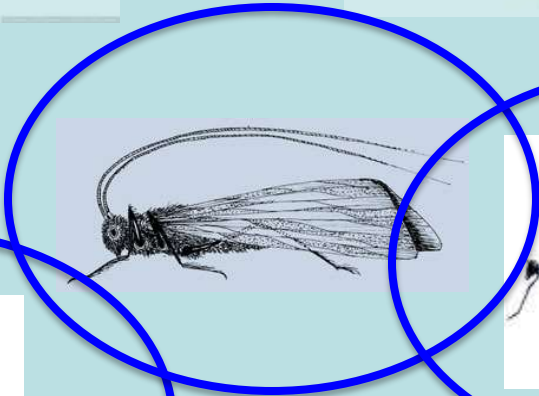
Fish Eat All Kinds of Critters



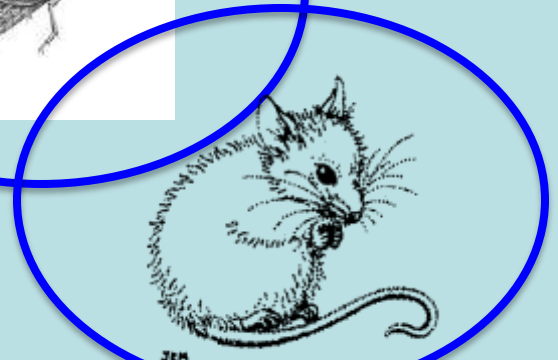
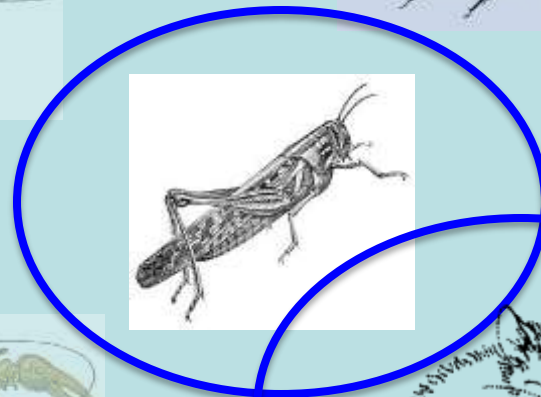
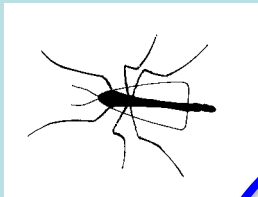
Animals That Live in the Water



Bugs That Live Part of Their Life Under Water



Critters That Live on Land



Many Kinds of Fishing Flies





Naturals

- Imitate what Fish is Eating
- Often Used for Matching a Hatch
- Fly Often Amplifies Triggers which Identify the Natural to the Fish



Attractors

- Fly Seeks to Trigger Instinct to Strike
- May Amplify Common Food Triggers (or Not)
- Often Used for Non-Feeding Periods

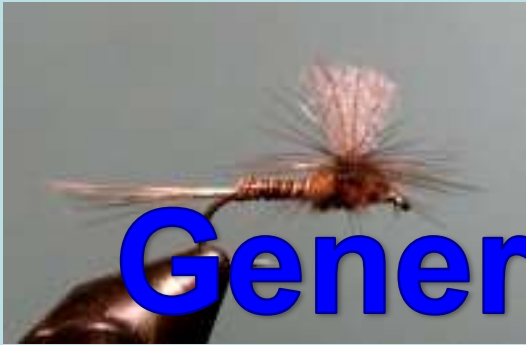
Many Kinds of Fishing Flies

Generally Grouped

If

Fished on Surface

Or Below It



Dry Flies

Flies That Float



Wet Flies

Flies That Sink



Wet Flies

Flies That Sink



**These Can Be Grouped
by**

**Type of Critter Imitated
& How Fished**



Nymphs

Imitate Immature Bugs which Live on Bottom



Streamers

Imitate Critters that Swim

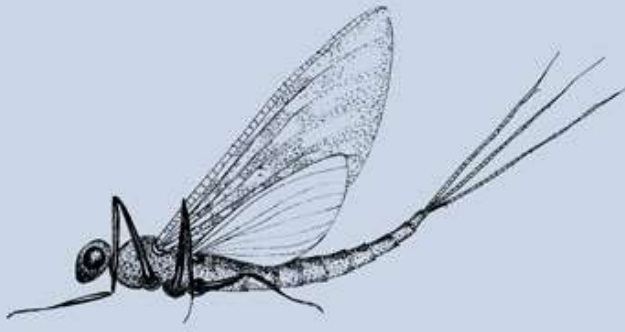


Soft Hackles & Emergers

Bugs Moving, Swimming, or Stuck Between Bottom & Surface



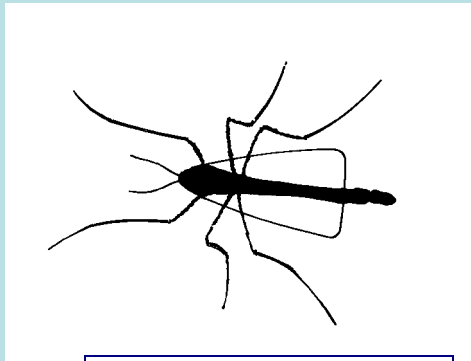
Aquatic Bugs Families



Mayfly



Caddis

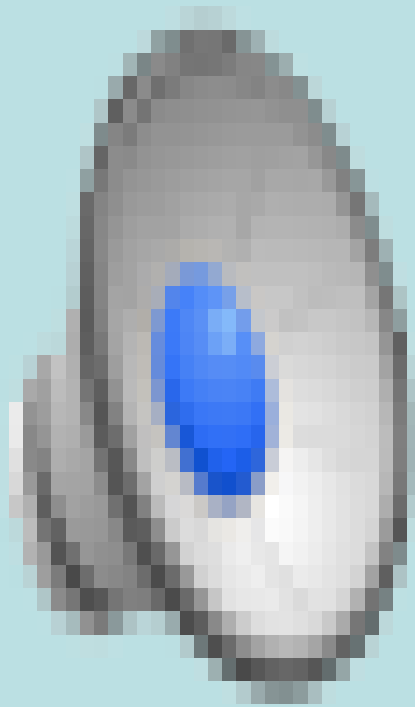


Midge



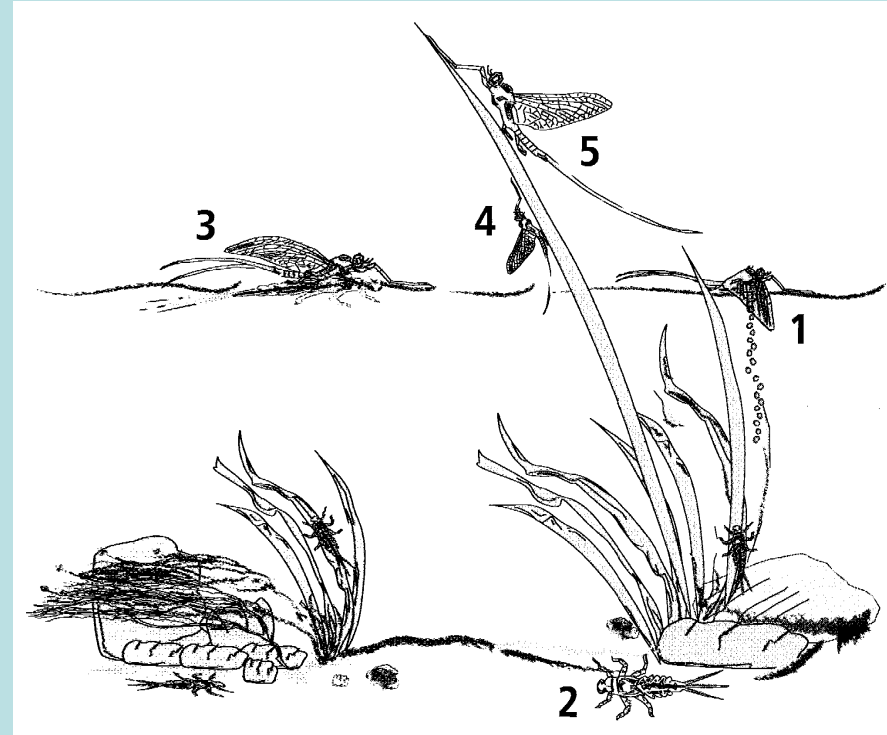
Stonefly

Nymphs



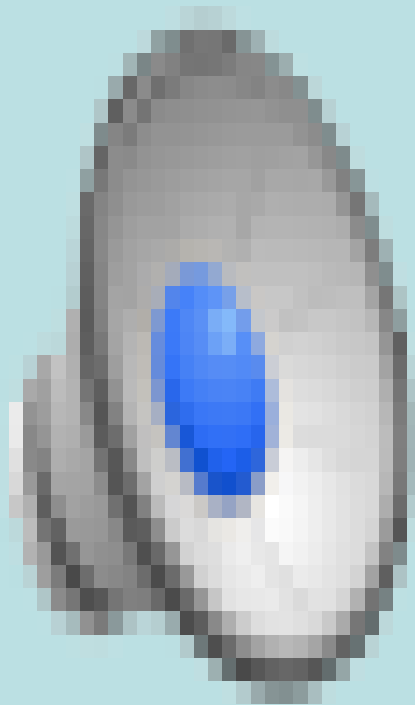
The Hatch

- Occurs ~ same time of year for individual species
- Hatches last several days - weeks
- Hatch is prime time for dry flies
- *Stoneflies and some mayflies crawl onto land to hatch.*

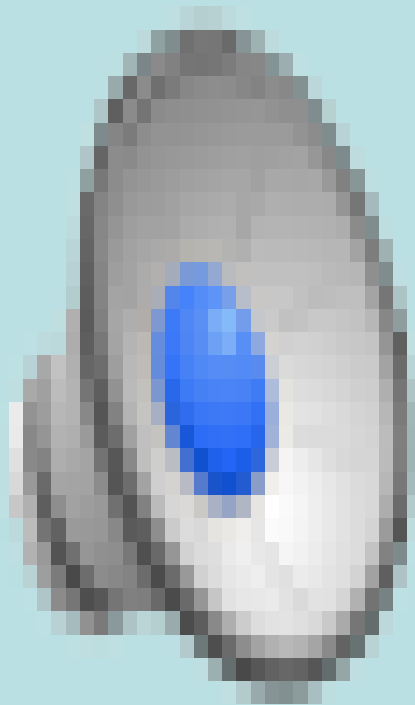


A Fly Fisher's Guide to the South Platte River by Pat Dorsey

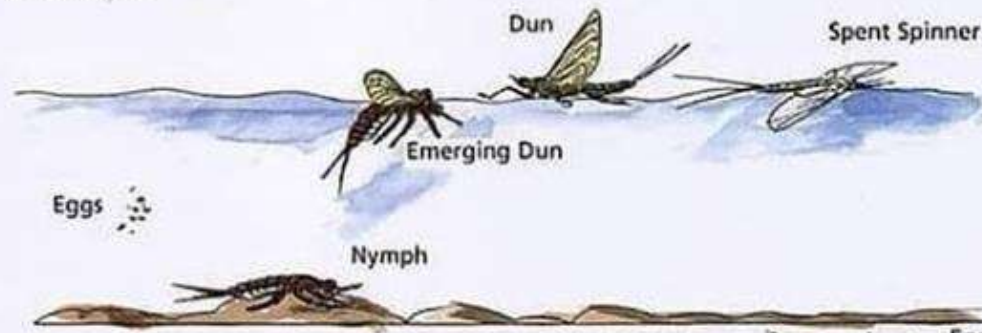
Mayfly Hatch



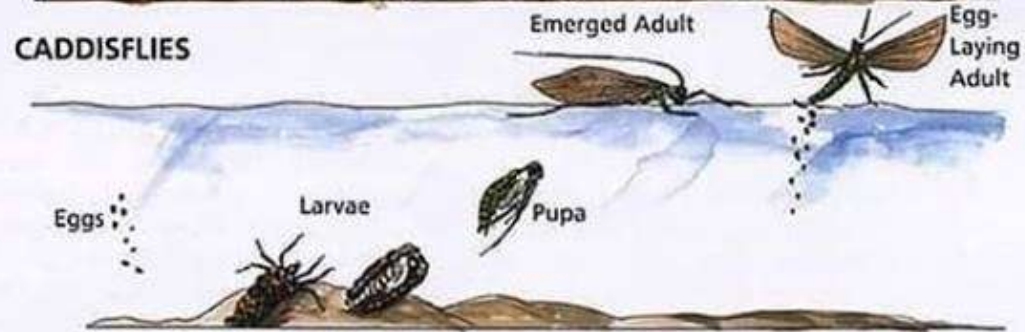
Bugs Egg Laying



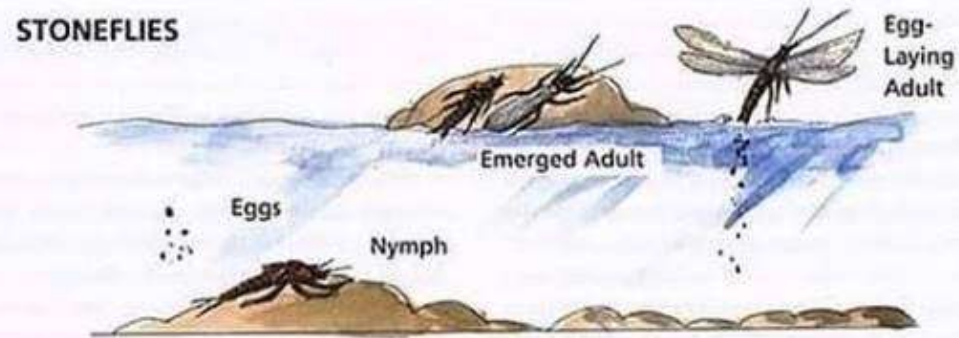
MAYFLIES



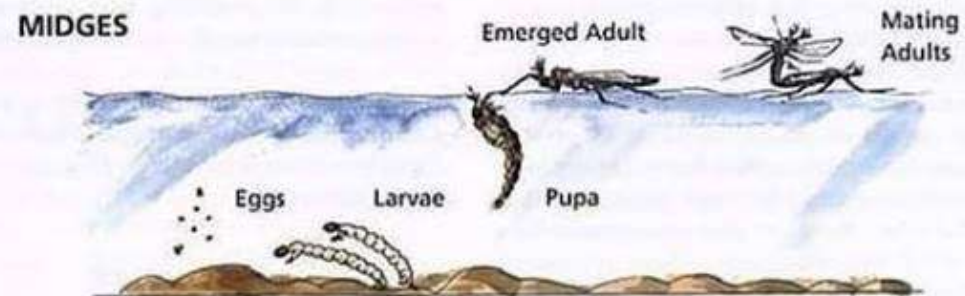
CADDISFLIES



STONEFLIES



MIDGES



How Closely Does Fly Have to Match the Hatch?

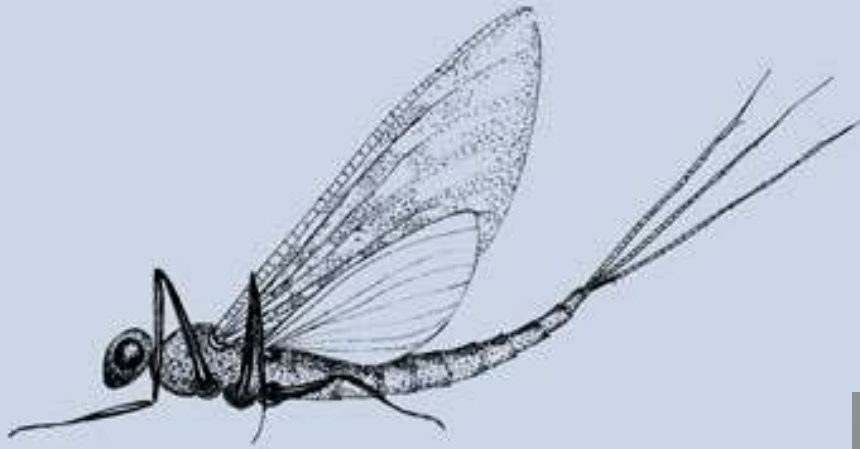
- Eating from Conveyor
- Separate Junk from Food
- Look for Signals Indicating It's Food

Triggers

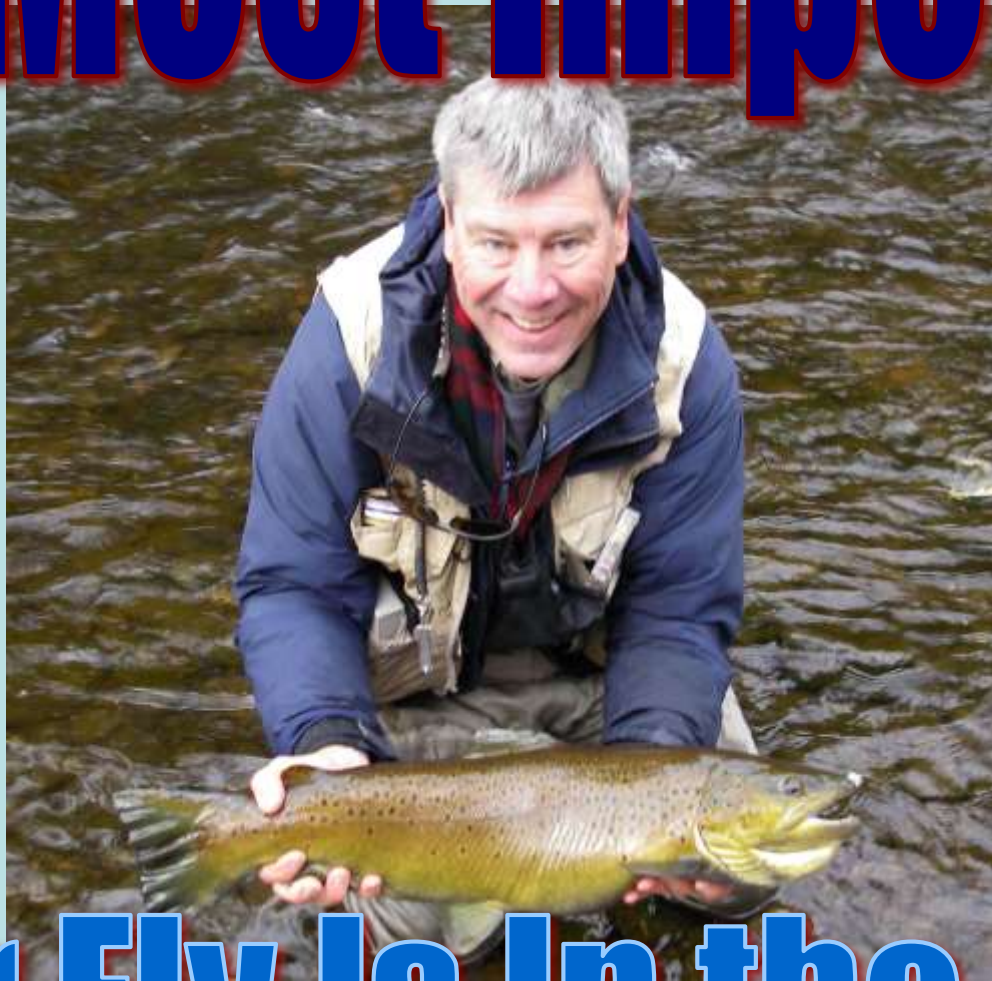
Food Indicator Signals

- Everything Else Ignored
 - This is why they ignore the hook
- Flies and Fishing Methods Hope to Mimic Food Triggers

Pareto of Properties that Define a
Fly's Trout Triggering Potential

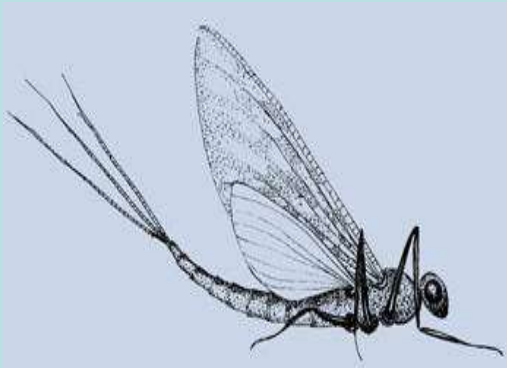


#1 Most Important



Your Fly Is In the Water

Fly's Trout Triggering Potential



Water Column Location
Action

Size

Shape

Color

A close-up photograph of an Olive Woolly Bugger fly. The fly is held by a pair of silver pliers. It features a large, bushy olive-green wing, a dark brown body, and a prominent black bead on the head. The background is a solid, light yellow color.

Olive Woolly Bugger

Beyond Trout

**Bass, Carp, Pike, Muskies,
Atlantic Salmon, Steelhead,
Bonefish, Stripped Bass,
Sharks, etc.**

**Fish Eat Different Food
&
Flies & Tactics Details
Can Be Modified to
Those Triggers**



Bass Are Not Trout

If a Bass is Actively Feeding – It will Eat Anything
Not Matching the Hatch –
Taunt Them/Tease Them

Water Column Location

Action

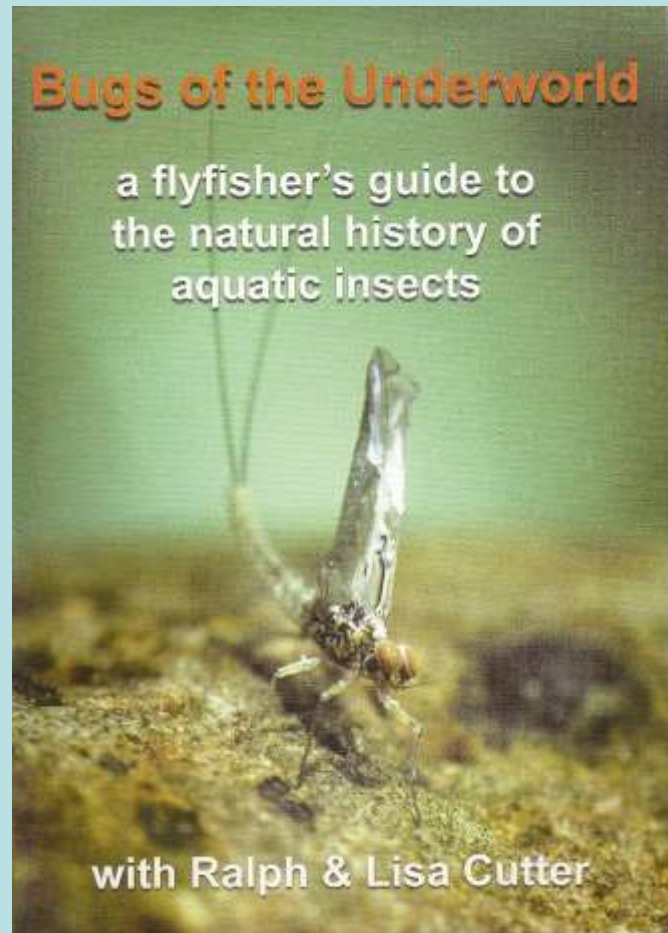
Big Fly Big Fish

Sound

Color



Video Excerpts from:



from California
School of Fly
Fishing by
Ralph & Lisa Cutter



www.flyline.com